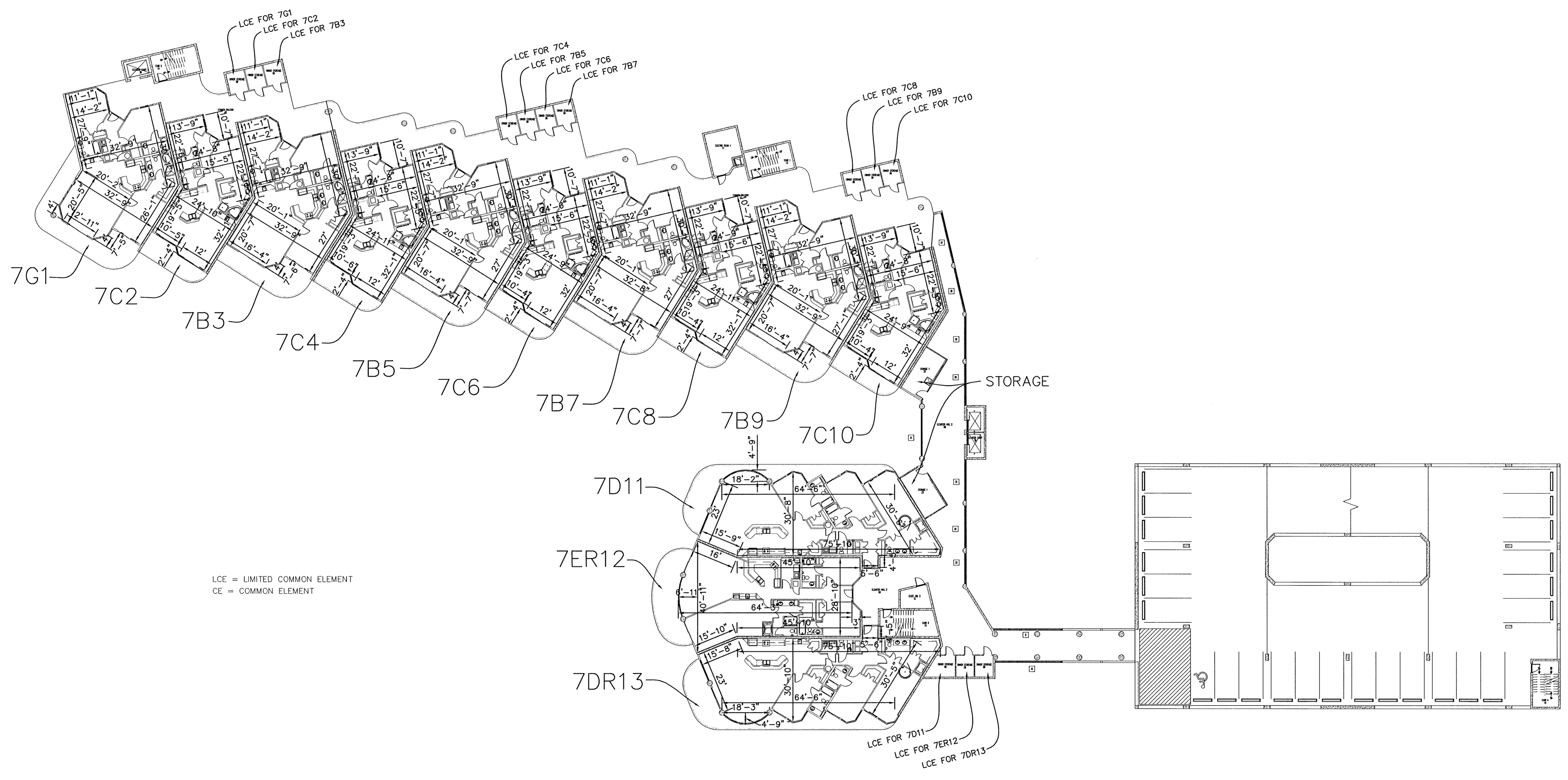


I, MIKELL D. SPEAKS, A REGISTERED LAND SURVEYOR IN THE STATE OF ALABAMA, HEREBY CERTIFY THAT THE FOLLOWING DIMENSIONS FOR THE UNITS IN PHOENIX ON THE BAY II CONDOMINIUMS ARE TRUE AND CORRECT.

Mikell D. Speaks
 ALABAMA REGISTRATION NO. 9127
 23rd DAY OF JANUARY, 2007



LCE = LIMITED COMMON ELEMENT
 CE = COMMON ELEMENT

NO.	DATE	DESCRIPTION	BY

PHOENIX ON THE BAY II
SEVENTH FLOOR

DATE: NOVEMBER, 2006
 DRAWN BY: J.A.S.
 CHECKED BY: M.D.S.
 CLIENT NAME: BRETT/ROBINSON
 JOB NO.: 06-1115
 SHEET NO.: 912,917,929
 SCALE: 1/8" = 1'-0"

NOT VALID WITHOUT EMBOSSED OR INK SEAL